

PREVENT THE SPREAD OF NON-NATIVE/ALIEN CRAYFISH

Help protect our native white-clawed crayfish.

Native white clawed crayfish cannot compete with alien crayfish which are now found in over 87% of river catchments. These introduced crayfish breed faster, damage riverbanks, eat lots of other river species and travel further than our native white-clawed crayfish. If people continue to help these alien/non-native crayfish move to new areas efforts to control them may not be in time to save the native white-clawed from extinction.

It is illegal to disturb native white-clawed crayfish. The introduction of alien/non-native crayfish to ANY waters is illegal. All fishing must be under EA licence and crayfish must not be used as bait. Saltwater fish are suitable for use as bait in freshwaters as they will not have been exposed to crayfish plague.

Please contact the organisations listed on the back page of this booklet if you have any information that may help protect our native white-clawed crayfish.

PREVENT THE SPREAD OF CRAYFISH PLAGUE

Aphanomyces astaci

Crayfish plague is caused by a fungus; it is carried by alien crayfish but kills our native white-clawed crayfish. Spores of the crayfish plague can be carried on fish, nets, lines, wellies & boats.

ALL river users can help by sterilizing their equipment before using it in another river.

Wet equipment can be sterilised by drying in bright sunlight and/or rinsing in dilute iodophore solution (or dilute bleach: 1 part bleach to 10 parts water) and then drying outside. Drying for 24 hours in the outdoors is the best and easiest method.

All movement of fish and damp equipment must be avoided between rivers.



ENJOY...

The beauty of our native white-clawed crayfish rivers. The presence of native crayfish is a sign that a river is healthy – **help to keep it that way!**



TAKE ACTION – SAVE OUR RIVERS, LAKES AND PONDS

Do not introduce or reintroduce alien crayfish

It is a criminal offence to release, or allow to escape, non-native crayfish species without a licence from the Environment Agency. Once caught, they must be removed and humanely killed.

Do not trap or remove crayfish

without a licence from the Environment Agency

Never use crayfish as bait

Disinfect and dry equipment

to prevent the spread of crayfish plague from one water body to another.

Report sightings

If you see any signal crayfish or anyone in possession of them, or attempting to trap, release or sell live crayfish, report it to the Environment Agency immediately.

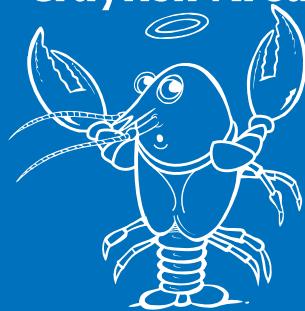
Environment Agency Incident Hotline:

0800 80 70 60 (freephone, 24hr)

“Fishstoppers” Anonymous Hotline:

01480 483023

Native White clawed Crayfish Area



UNDER THREAT - NATIVE WHITE-CLAWED CRAYFISH

Native white-clawed crayfish have been present in our UK waters for hundreds of years. The invading alien species were introduced in the 1970's and 80's.

They are now killing our native species by being more aggressive, faster breeding and carrying crayfish plague. They also damage riverbanks by burrowing into them.

Our native white-clawed crayfish likes clean, flowing waters. If you have native crayfish in your river then you have a healthy environment. That's good for humans and for the plants and animals that live in our waterways.



NATIVE WHITE-CLAWED CRAYFISH

IDENTIFICATION

Usually less than 10cm long (can be up to 12cm).
Brown to olive colour,
pitted appearance

CLAWS

Underside dirty pinky white.



Austropotamobius pallipes

ALIEN AMERICAN RED SIGNAL CRAYFISH

IDENTIFICATION

Average 15cm long (can be up to 30cm)
Reddish brown colour

CLAWS

Underside bright red,
turquoise/white patch on
upper claw junction



Pacifastacus leniusculus

NARROW CLAWED/ TURKISH CRAYFISH

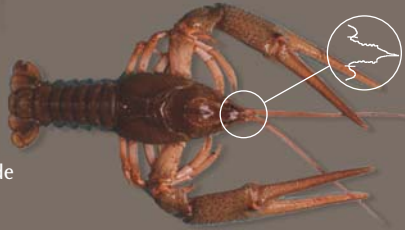
IDENTIFICATION

Average 15cm long (can be up to 30cm)

CLAWS

Long and narrow, underside
same colour as body

Photographs by David Holdich



Astacus leptodactylus

WHAT TYPE OF CRAYFISH DO YOU HAVE IN YOUR LOCAL RIVER, LAKE OR STREAM?

Use the identification guide opposite to find out.

Alien American red signal crayfish are aggressive and invasive and must be controlled.

Native white-clawed crayfish and their habitats are protected by law and must be left undisturbed.

Look for these signs on a river near you:



CONTACT DETAILS



www.environment-agency.gov.uk

Environment Agency Incident Hotline:
0800 80 70 60 (freephone, 24hr)

"Fishstoppers" Anonymous Hotline:
01480 483023



Lark Angling & Preservation Society
FOUNDED 1893

01842 815421

www.lark-angling.co.uk

The Brecks Partnership
Kings House, King Street, Thetford,
Norfolk, IP24 2AP
01842 760116 / 01842 761569
brecks.project@et.suffolkcc.gov.uk

The Brecks

www.brecks.org

